

Legend

- School Locations
- Fire Station Facilities
- Tax Parcels
- Commissioner District
- Unincorporated Urban Growth Area
- Incorporated City
- Reservation Boundaries
- Military
- Park

Limited Areas of More Intense Rural Development

TYPE

- Type I - Rural Commercial; Rural Historic Town; Rural Village
- Type II - Employment Center
- Type III - Employment Center

Street Center Lines

- State Highway
- Major Road
- Collector / Arterial
- Local Access; Local Road
- Railroad Lines
- Road Rights-of-Way

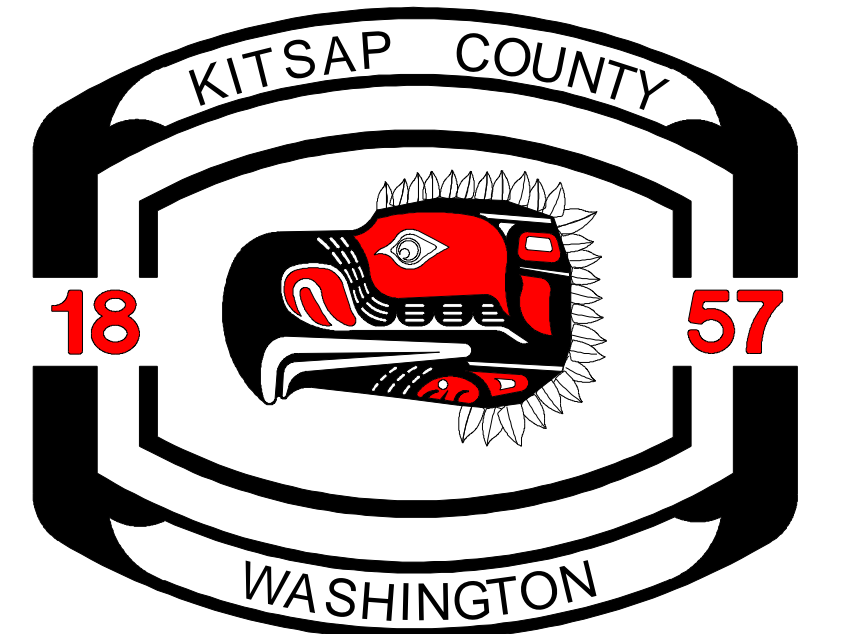
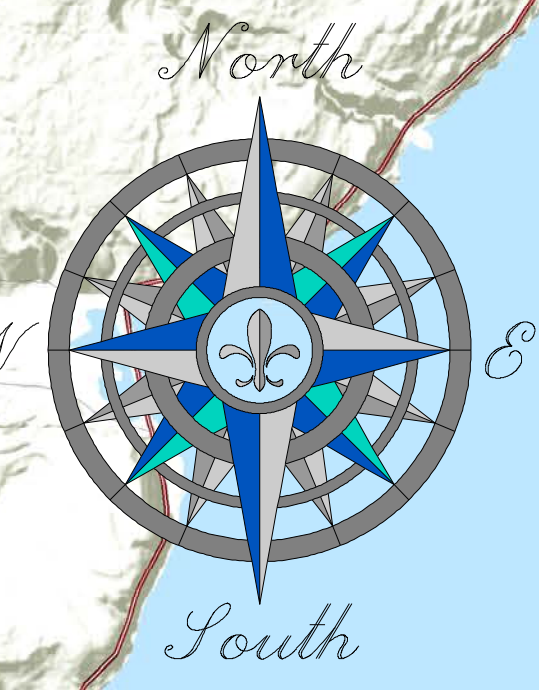
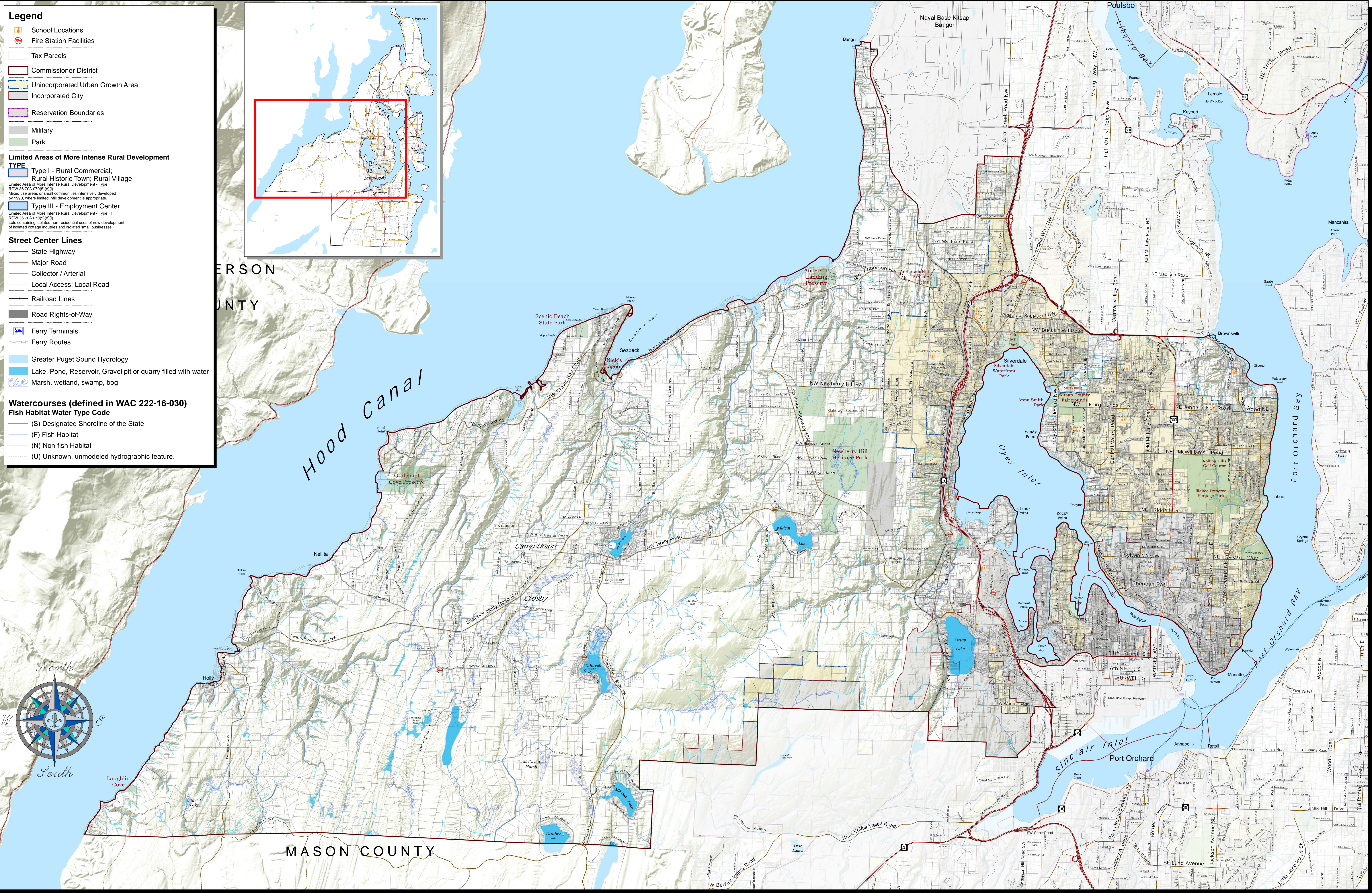
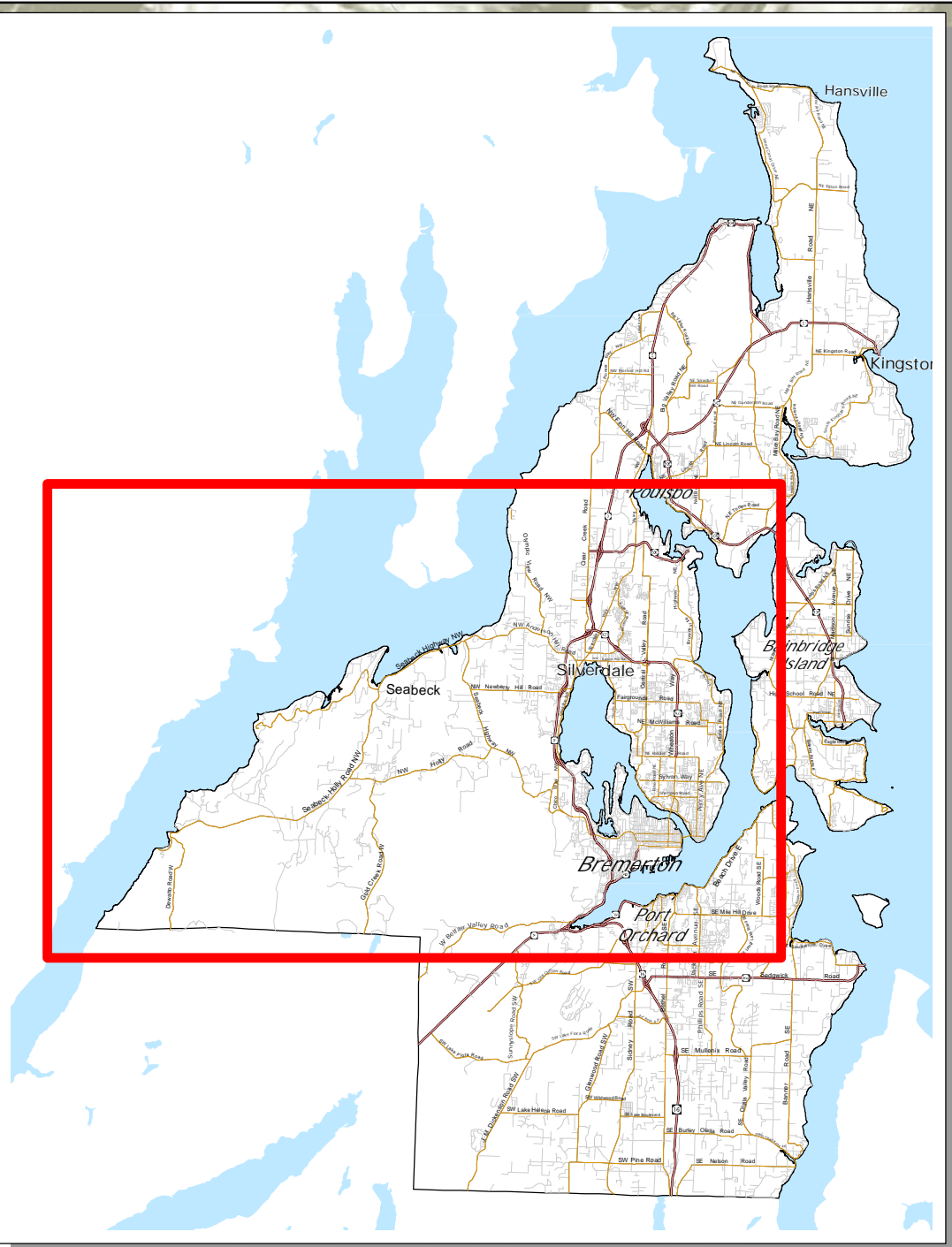
Ferry Terminals

- Ferry Routes

Watercourses (defined in WAC 222-16-030)

Fish Habitat Water Type Code

- (S) Designated Shoreline of the State
- (F) Fish Habitat
- (N) Non-fish Habitat
- (U) Unknown, unmodeled hydrographic feature.



Commissioners District 3

Kitsap County, Washington

Kitsap County Department of Community Development
 614 Division Street, MS-36, Port Orchard, Washington 98366
 VOICE (360) 337-5777 * FAX (360) 337-4925

This map was created from existing map sources, not from field surveys. Determination of fitness for use lies with the user, who does the responsibility for understanding the accuracy and limitations of this map and data.

The information on this map may have been collected from various sources and can change over time without notice.

While great care was taken in making this map, there is no guarantee or warranty of its accuracy as to labeling, placement or location of any geographic features present. This map is intended for informational purposes only and is not a substitute for a field survey.

Kitsap County and its officials and employees assume no responsibility or legal liability for the accuracy, completeness, reliability, or timeliness of any information on this map.

Map Published Date: March 28, 2017